



BO⚡T MANAGER

Software Guide Version 2

May 20, 2015

© 2014 Teradek, LLC. All Rights Reserved.

Table Of Contents

Revision History	2
Introduction	3
Bolt Device Information	4
Device Configuration.....	5
Region Selection (All models)	5
Frequency Selection (Bolt Pro 600 and 2000 only).....	5
Color Processing.....	6
Live LUT	6
Manage LUTs.....	6
Firmware Upgrade	7

Revision History

Version	Changes	Date
1	Initial version for Bolt Manager 3.0.5	07/2014
2	Update for Bolt Manager 3.1.x	05/2015

Introduction

Available at www.teradek.com/pages/downloads, Bolt Manager allows you to configure and upgrade your Bolt Pro 300, 600, and 2000. When installed and opened, you are presented with 4 options:

- *Pairing* - Contains instructions for pairing Bolt TX and RX devices.
- *Settings* - This section allows you to configure device operation parameters.
- *Color Processing* - Allows you to apply 3D LUTS to second generation Bolt RX video output.
- *Upgrade* - Use this section to update your device with the latest firmware from Teradek.
- *Status* - Displays detailed information about configuration and update statuses.
- *About* - Contains information about the Application version and Teradek's software License Agreement.

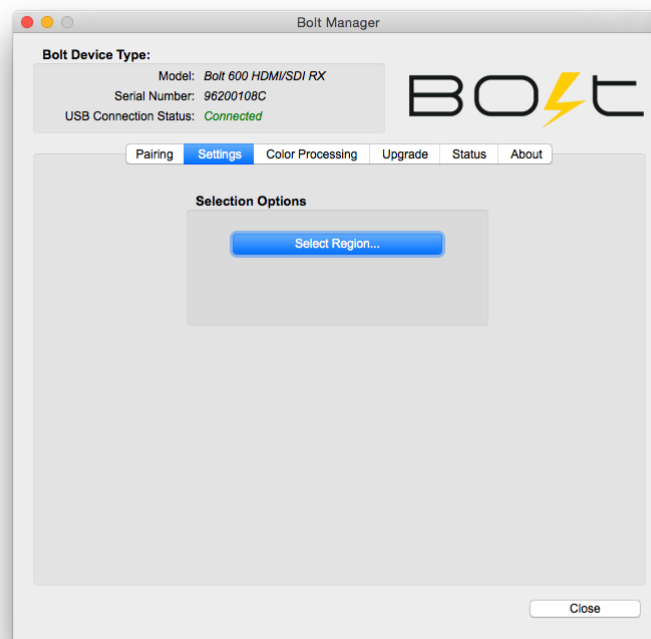


Figure 1 Bolt Manager home screen

Bolt Device Information

The top left portion of Bolt Manager displays information about the connected device. Bolt Pro 300, 600, and 2000 connect to your computer via a standard Mini-B USB cable (not included). **Note:** The USB 3.0 port on Bolt receivers is used for video only, not configuration.

Bolt's USB configuration port is located on the left side of both the transmitter and receiver. It can be found just above the HDMI port, or the port cover on SDI-only models.

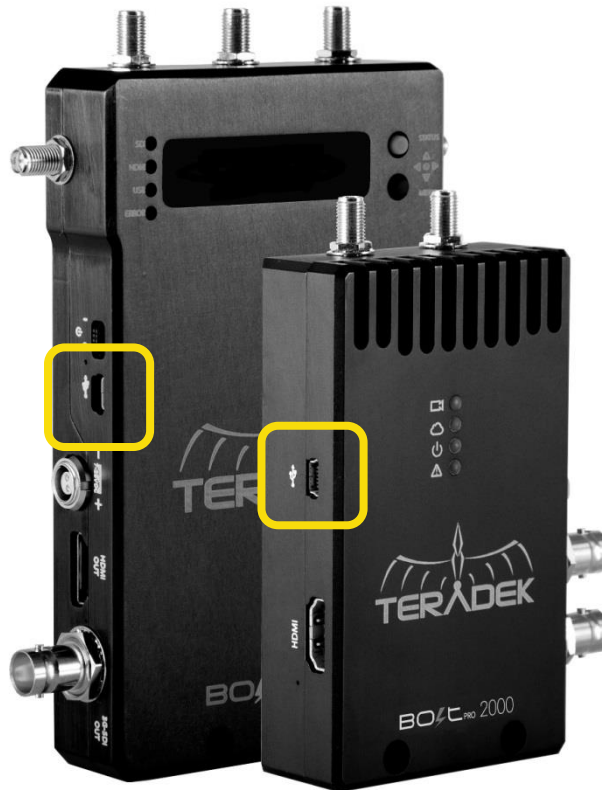


Figure 2 Bolt USB ports

Once Bolt is connected and powered on, the Model description, serial number, and 'Connected' status will be shown in the top left portion of Bolt Manager. You can now configure or upgrade Bolt.

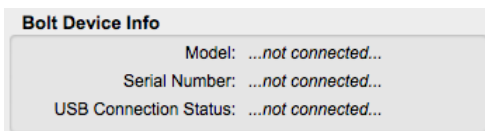


Figure 3 Device not connected

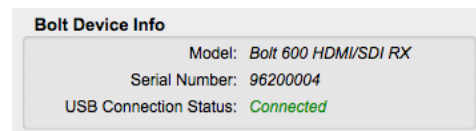


Figure 4 Device Connected

Device Configuration

Different options are available based on your Bolt model – 300, 600, or 2000.

Region Selection (All models)

Configure Bolt Pro to comply with your region's regulations governing use of the 5GHz spectrum. Three regions are available: USA, Europe, and Japan. Each region is configurable for either indoor or outdoor use. Transmitter and receiver must be configured with the same region.

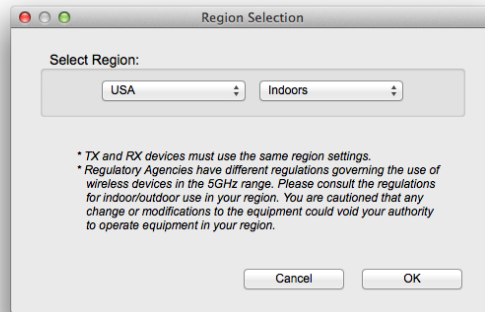


Figure 5 Region Selection

Frequency Selection (Bolt Pro 600 and 2000 only)

Use this to select which frequencies Bolt Pro will use during operation. For best results, configure the transmitter and receiver to use the same set of channels.

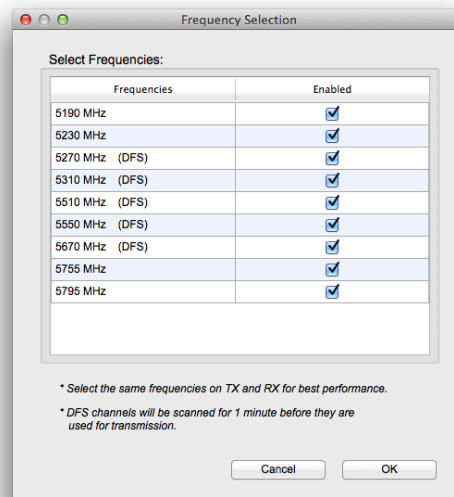


Figure 6 Frequency Selection

Color Processing

Color processing allows users to apply 3D LUTs directly to a Bolt receiver's video output, or to add, remove, and modify up to 16 LUTs stored in Bolt's memory.

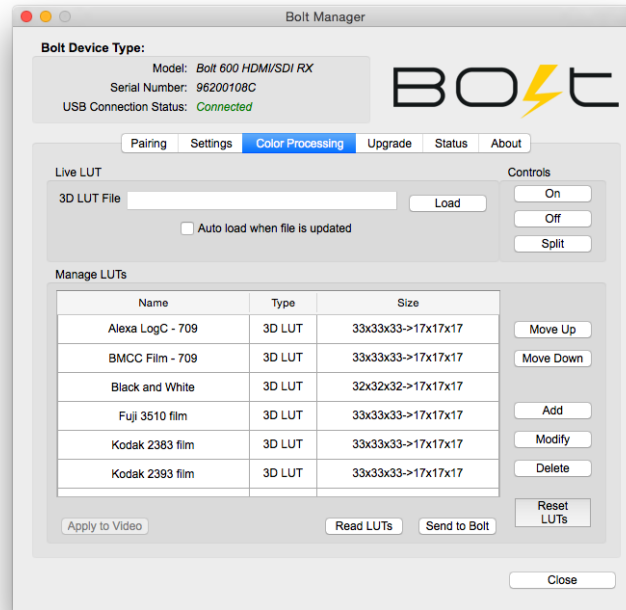


Figure 7 Color Processing

Live LUT

Live LUT allows you to select a 3D LUT file to be immediately applied to Bolt's video outputs. Use this to preview looks on your wireless camera feed as you edit them.

Click 'Load' and browse for a 3D LUT file to apply it the video output. The following file formats are supported:

- .dat (DaVinci Resolve)
- .3dl (Assimilate Scratch)
- .cube (DaVinci Resolve)
- .lut (Pomfort LiveGrade)
- .mga (Final Cut)

Once selected, the 3D LUT will be applied to the video output. 3D LUTs can be turned on, off, or applied to one half of the screen with the 'On', 'Off', and 'Split' buttons.

If the 3D LUT file must be changed multiple times in order to achieve the desired look, check 'Auto load when file is updated.' The LUT file will be re-read and applied to the video automatically whenever it is updated on your computer.

Manage LUTs

The LUT manager allows you to select up to 16 3D LUT files to store on Bolt. LUTs can be rearranged, renamed, added, and removed using the corresponding buttons.

Sync – When Bolt Manager is first connected to a Bolt receiver, only the 'Sync' button is available. Before use, click the Sync button to read Bolt's memory. After Syncing, all the currently loaded LUTs will be displayed in the manager window.

Apply to Video – Click this button to use the selected 3D LUT file on the video output. The LUT can be controlled with the ‘On’, ‘Off’, and ‘Split’ buttons.

Read LUTs – ‘Read LUTs’ will read Bolt’s storage and overwrite the contents of the LUT management window.

Send to Bolt – Click this button to write your LUT presets to Bolt.

Reset LUTs – Clicking ‘Reset LUTs’ will reset Bolt’s storage to default values. A number of pre-defined LUTs are contained in the default configuration.

Firmware Upgrade

Teradek releases firmware updates periodically. These updates add new features, improve performance, and fix observed issues.

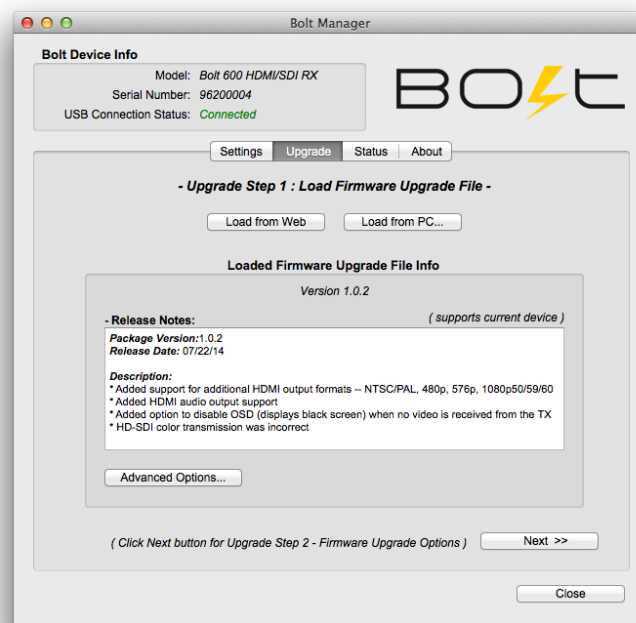


Figure 8 Firmware Upgrade Step 1

To update Bolt Pro, you’ll first need to load a firmware package into Bolt Manager. This can be done two ways:

- **Load from Web:** If you have an active Internet connection, Click ‘Load from Web’ to download the latest firmware package from Teradek’s servers.
- **Load from PC:** Click load from PC if you have already downloaded the firmware package you wish to use. You will be prompted to browse for and select the package. Firmware is hosted on the download page of Teradek’s web site: <http://www.teradek.com/pages/downloads#Bolt>

Once the firmware is loaded, information about the package, including version number, release notes, and the release date is displayed. In addition, a note will indicate whether or not your device is supported.

Click ‘Next’ to proceed after loading the firmware. You will be presented with a list of the device components and whether or not they are scheduled to be updated.

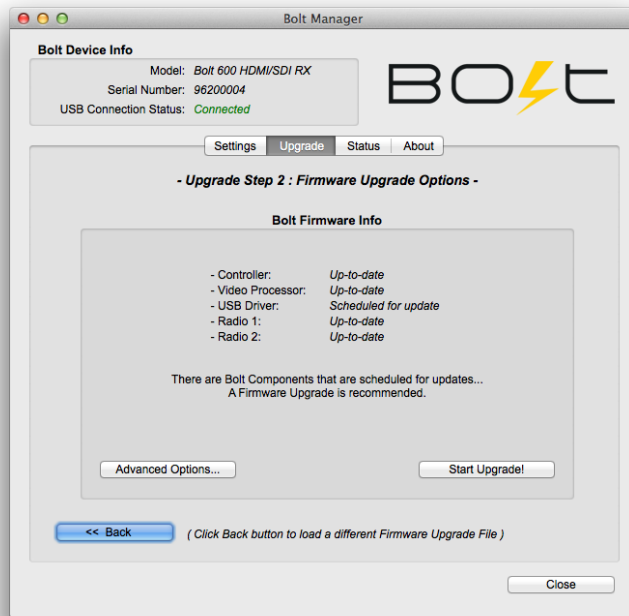


Figure 9 Firmware Upgrade Step 2

From this screen, click 'Start Upgrade' to update your unit. Alternately, you can click 'Advanced Options' to view detailed version information for each component and the firmware upgrade package components. The Advanced screen also allows users to select which components to upgrade. **Note:** not all component firmware versions are interoperable, Teradek recommends following the default update procedure unless otherwise instructed.

Note: Do not disconnect your device or power it down while the update is in process.