



INTEL-A-JIB™

BASIC SAFETY GUIDELINES

USER IS RESPONSIBLE FOR THE SAFE OPERATION OF THIS EQUIPMENT.

-WARNING-

FAILURE TO FOLLOW THESE SAFETY GUIDELINES MAY RESULT IN DAMAGE TO THE EQUIPMENT, SERIOUS INJURY, OR DEATH.

1. **Only individuals trained in the safe operation and use of this type of equipment should use this equipment, and in addition to these basic safety precautions the same safety rules and precautions apply to the Intel-A-Jib as to any other camera mounting equipment.**
2. **User must read all safety labels and at all times observe load capacity ratings of the Intel-A-Jib.**
3. **When mounting the Intel-A-Jib and camera package, make sure that the tripod or other mounting support is sufficiently rated and suitable for the total weight load including the Intel-A-Jib and counterbalance weights.**
4. **When mounting the Intel-A-Jib on a dolly, a center support should be used.**
5. **User must periodically inspect the Intel-A-Jib and related hardware and components prior to and during use to ensure that they are stable and secure, and all hardware and fittings are tight.**
6. **User must periodically inspect all tripods, dollies or other Intel-A-Jib mounts prior to and during use to ensure that they are stable and secure, and all hardware and fittings are tight.**
7. **When inserting connector pins, make sure that they are fully inserted to lock properly into place.**
8. **Do not use the Intel-A-Jib near high voltage or exposed electrical wires.**
9. **Do not use any Intel-A-Jib that has damage or is missing components.**
10. **Do not use the Intel-A-Jib for any purpose other than its intended use.**

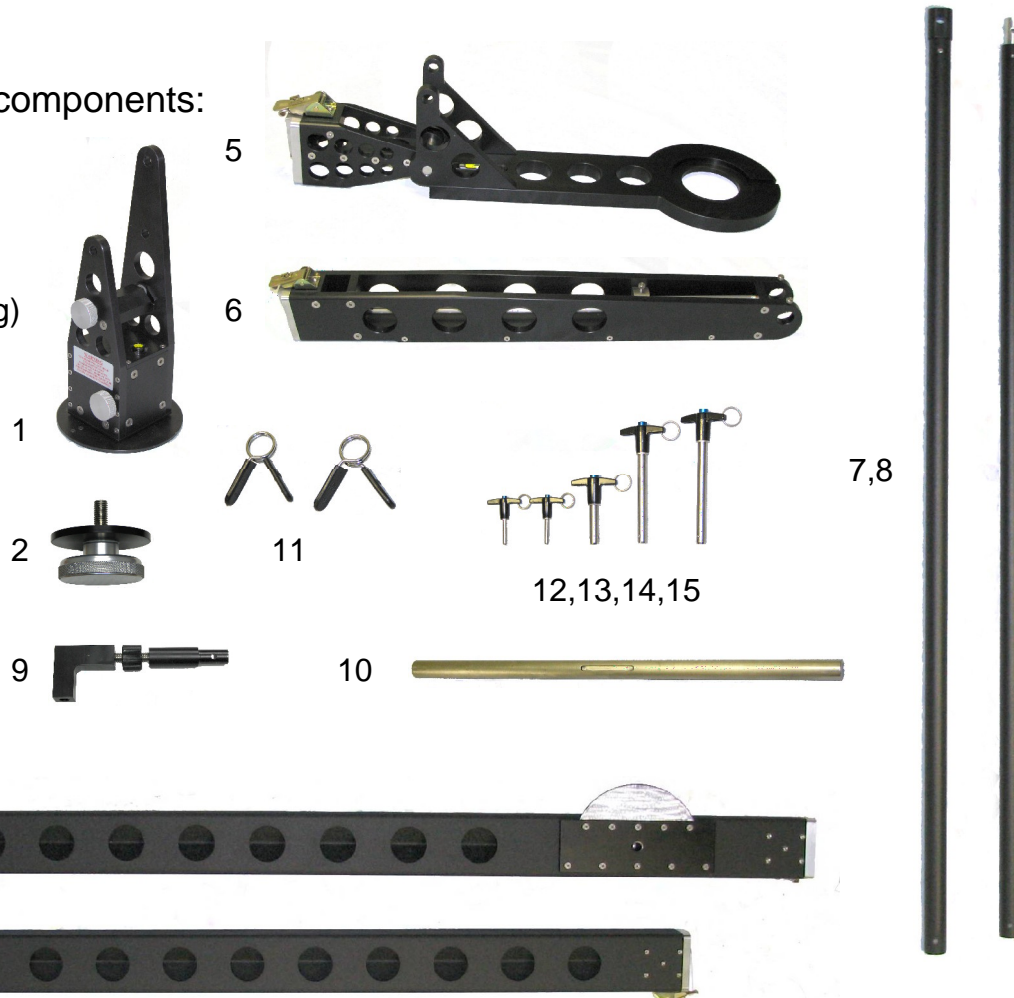
Intel-A-Jib™



Intel-A-Jib Setup Instructions

The Intel-A-Jib consists of the following components:

1. Fulcrum
2. Fulcrum tie-down
3. Main arm section (5 feet long)
4. Extension arm section (4 feet long)
5. Spoonbill
6. Tail section
7. Main parallel rod
8. Extension parallel rod
9. Spoonbill tilt adjuster
10. Weight rod
11. Weight retainers (2)
12. Small connector pins (2)
13. Medium connector pin
14. Large connector pin
15. Extra large connector pin



Some images enlarged for clarity:

© IAT, Inc.

Intel-A-Jib Assembly:

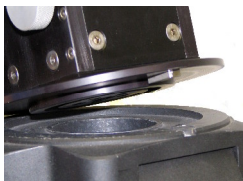
Important: Before mounting camera or head on assembled jib, support spoonbill from below with an apple box or similar or adjust jib support height to allow spoonbill to rest on the ground.

Warning: Read label on fulcrum: tilt brake will not hold unbalanced load!

Note: Assembly of the arm and rods should take approximately two to three minutes (once you're familiar with the components)

Six-foot configuration:

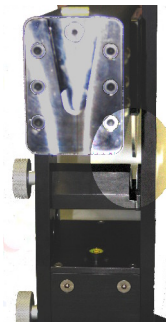
1. Place fulcrum on suitable mount, usually either tripod or dolly; be sure to align fulcrum key into mount keyway
2. Thread fulcrum tie-down through hole in mount and into base of fulcrum; adjust mount to center bubble level on fulcrum
3. Place main arm section in fulcrum carefully aligning brake plate into brake slot
4. Insert extra large connector pin through fulcrum side plates and arm
5. Place spoonbill on end of main section by inserting male end of dovetail joint into female end of dovetail joint on main section; close latch
6. Place tailpiece on main section by inserting male end of dovetail joint into female end of dovetail joint on main section; close latch
7. Install main section parallel rod to fulcrum to the inside of the fulcrum side plate using the medium connector pin
8. Attach the spoonbill tilt adjuster to the main parallel rod using the small connector pin
9. Attach the spoonbill tilt adjuster to the spoonbill using the large connector pin
10. Rotate knurled knob on spoonbill tilt adjuster to center bubble level in spoonbill
11. Insert weight rod into tailpiece with slot facing up and tighten thumbscrews into slot
12. Place weights onto weight rod to balance arm and install weight retainer clips making sure that weights are evenly distributed on both sides of the bar
13. Make fine balance adjustments by sliding the weight front to back along the rods in the tailpiece and lock in proper position
14. Mount camera, balance again and shoot!



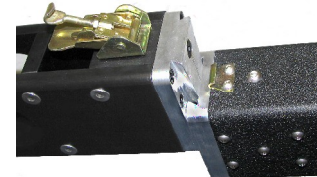
1. keyway alignment



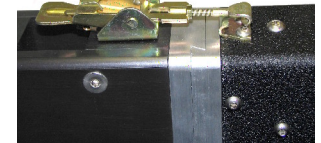
2. fulcrum tiedown



3. brake plate alignment



5,6,7. dovetail joint

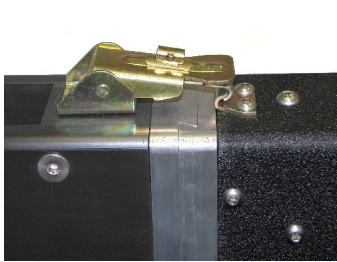


5,6,7. latch engaged/open

Intel-A-Jib Assembly:

Ten-foot configuration:

1. Place fulcrum on suitable mount, usually either tripod or dolly; be sure to align fulcrum key into mount keyway
2. Thread fulcrum tie-down through hole in mount and into base of fulcrum; adjust mount to center bubble level on fulcrum
3. Place main arm section in fulcrum carefully aligning brake plate into brake slot
4. Insert extra large connector pin through fulcrum side plates and arm
5. Place extension arm on main section by inserting male end of dovetail joint into female end of dovetail joint on main section; close latch
6. Place spoonbill on end of main section by inserting male end of dovetail joint into female end of dovetail joint on main section; close latch
7. Place tailpiece on main section by inserting male end of dovetail joint into female end of dovetail joint on main section; close latch
8. Install main section parallel rod to fulcrum to the inside of the fulcrum side plate using the main arm section fulcrum pin
9. Install extension parallel rod to the main section parallel rod using the small connector pin
10. Attach the spoonbill tilt adjuster to the extension parallel rod using the small connector pin
11. Attach the spoonbill tilt adjuster to the spoonbill using the large connector pin
12. Rotate knurled knob on spoonbill tilt adjuster to center bubble level in spoonbill
13. Insert weight rod into tailpiece with slot facing up and tighten thumbscrews into slot
14. Place weights onto weight rod to balance arm and install weight retainer clips making sure that weights are evenly distributed on both sides of the bar
15. Make fine balance adjustments by sliding the weight front to back along the rods in the tailpiece and lock in proper position
16. Mount camera, balance again and shoot!



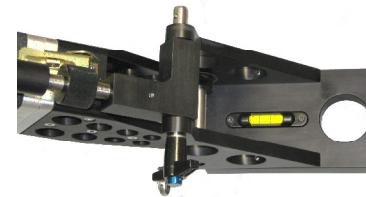
5,6,7. Latch engaged/closed



Assembled fulcrum
Top knob: tilt brake
Bottom knob: pan brake



Fulcrum from above
note parallel rod and
connector pin placement



Assembled spoonbill
note tilt adjuster and
connector pin placement



Weight rod showing
slot for thumbscrews
and fine balance weight

Intel-A-Jib™

Variable Length Jib Arm Specifications

Set-up Time:	Two minutes
Min. Reach:	6 feet
Max. Reach:	10 feet
Weight:	65 pounds with extension for 10' reach
Max. Weight Capacity:	120 lbs. at 6'; 80 lbs. at 10'
Mounting Requirements:	Dolly, tripod or other with 7" Mitchell mount
Camera Mounting:	Over or under 7" Mitchell mount
Overall Assembled Length:	116" @ 6' reach; 165" @ 10' reach
Construction:	Machined/extruded aluminum, stainless steel
No. of Arm Sections:	One for 6' reach; Two for 10' reach
Counterweight/Camera Ratio:	1.8:1 @ 6'; 3:1 @ 10'
Counterweight Style:	Standard 1" barbell
Other Features include:	<ul style="list-style-type: none">- Fine Tuning Weight- Tilt Brake- Pan Brake- Camera Platform Level Adjustment- Dual Bubble Levels

Note: All specifications are approximate and subject to change without notice.

INDUSTRY ADVANCED TECHNOLOGIES, INC.
3529 Old Conejo Road, Unit 118, Newbury Park, CA 91320
P: (805) 498-5119; F: (805) 498-5006
mail@industryadvanced.com