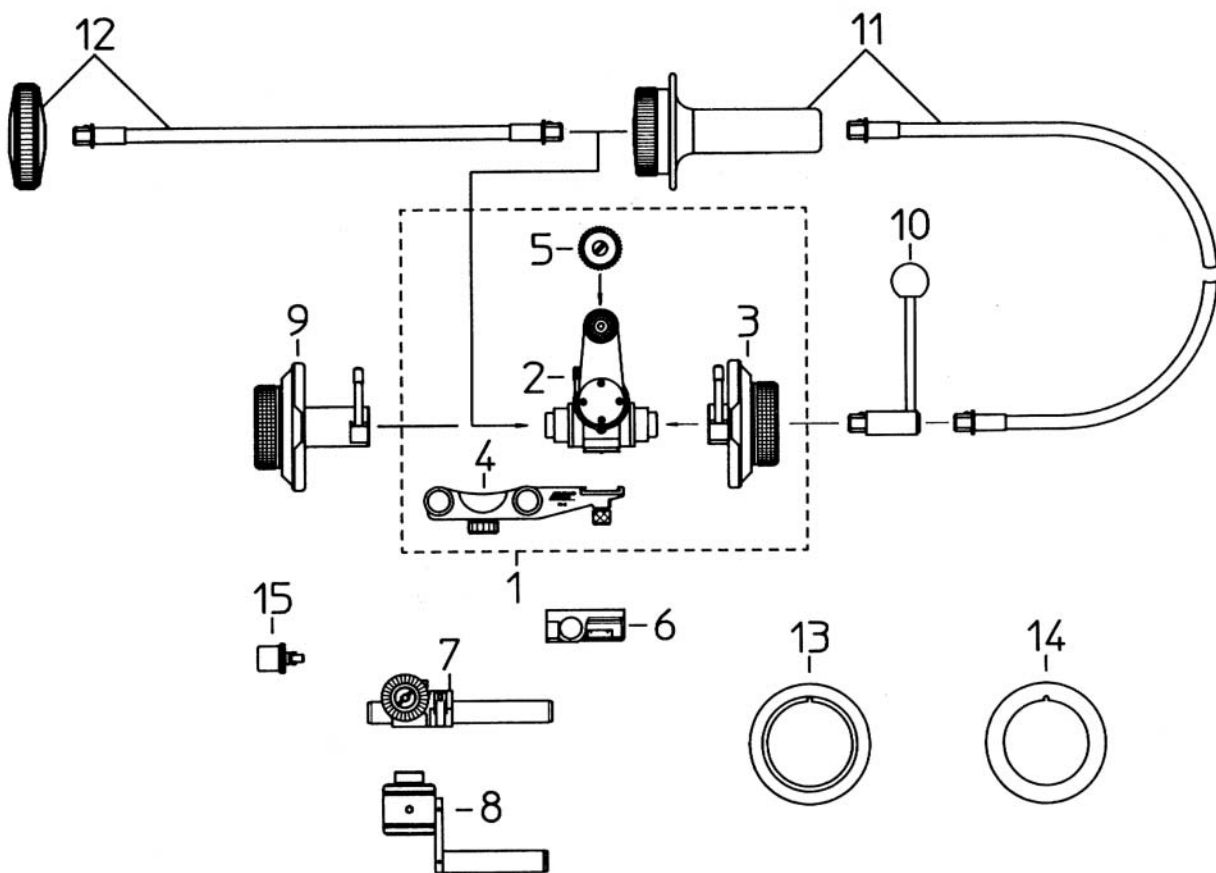


LIGHTWEIGHT FOCUS DRIVE SYSTEM (LFD)



<u>Pos. #</u>	<u>U.S. #</u>	<u>Factory #</u>	<u>Description</u>
LIGHTWEIGHT FOCUS DRIVE SYSTEM (LFD)			
1	381460	K0.59996.0	Lightweight Focus (LFD) includes; focus drive (381462), left knob (381464), lightweight support mounting bracket (381466) and focus gear for 16mm zooms (381468)
2	381462	K2.47238.0	Focus drive, LFD (replacement for unit included in #1)
3	381464	K2.47246.0	Focus knob, left, FK-1 (replacement for unit included in #1)
4	381466	K2.47249.0	Bracket FH-2, for lightweight support (replacement for unit included in #1)
5	381468	K2.47252.0	Gear for prime lenses and 16mm zoom lenses (Gear-2), (replacement for unit included in #1)
6	381470	K2.47299.0	Bracket FH-1, required for mounting LFD on a single rod support SRS-4 or SRS-5
7	381472	K2.47245.0	Single rod support SRS-4, for mounting LFD on 435, requires 381470
8	381474	K2.47290.0	Single rod support SRS-5, for mounting LFD on 535B, requires 381470
9	381476	K2.47250.0	Focus knob, right side, FK-2 for LFD
10	380140	K2.32730.0	Focus Lever
11	380130	K2.32731.0	Flexible shaft, 38" long with knob
12	381130	K2.34100.0	Flexible shaft, 13.5" long, with knob
13	381478	K4.47621.0	Marking disc, conical, for LFD
14	381480	K2.47292.0	Marking disc, standard, for LFD